

Redmine 安装、设置、部署全程图解

版本号: 2010-08-31

编写日期: 2010-08-31

完成日期: 2010-08-31

编写人: 高强

安装准备

1.1 Redmine 官方提示

Ruby & Ruby on Rails & Rack

The required Ruby and Ruby on Rails versions for a given Redmine version is:

Redmine version	Supported Ruby versions	Required Rails version	Required Rack version
current trunk	ruby 1.8.6, 1.8.7	Rails 2.3.11	Rack 1.1.1
trunk from r2887 to r4903	ruby 1.8.6, 1.8.7	Rails 2.3.5	Rack 1.0.1
trunk from r2493 to r2886	ruby 1.8.6, 1.8.7	Rails 2.2.2	
trunk before r2493	ruby 1.8.6, 1.8.7	Rails 2.1.2	
1.2.x	ruby 1.8.6, 1.8.7	Rails 2.3.11	Rack 1.1.1
1.1.x	ruby 1.8.6, 1.8.7	Rails 2.3.5	Rack 1.0.1
1.0.x	ruby 1.8.6, 1.8.7	Rails 2.3.5	Rack 1.0.1
0.9.x	ruby 1.8.6, 1.8.7	Rails 2.3.5	Rack 1.0.1
0.8.x	ruby 1.8.6, 1.8.7	Rails 2.1.2	

- **Ruby 1.9 is not supported yet.** You *have* to use Ruby 1.8.x as stated above.
- **RubyGems** 1.3.7 or higher is required with following limitations :
 - **Rails 2.3.5 will fail with RubyGems 1.5.0 or later**, stick to previous versions of RubyGems !
 - **Rails 2.3.11 will fail with RubyGems 1.7.0 or later**, stick to previous versions of RubyGems !
- **Rake 0.8.7 is required** (rake 0.9.x is not supported by Rails yet)
- **Rack** 1.1.x is required, 1.1.0 has a bug with quotes ([#8416](#)). Database migration would fail with other version.
- **Mongrel** 1.1.5 needs a patch attached to [#7688](#) to work fine with Rails 2.3.11. In case of upgrade, another issue may appear for some time after migration ([#7857](#)).
- **I18n** 0.4.2 is required for Redmine >= 1.0.5
- **Rails** 2.3.11 to 2.3.14 suffer from a major issue with sending mails to multiple recipients, see [#8751](#) for details and solution.
- **Rails** 2.3.14 is a minor security release known to work fine with Redmine 1.2.x series (except for previous point) and can be used as a replacement for 2.3.11 (read config/environment.rb first).
- **MySQL 5.0 or higher (recommended)** make sure to install the C bindings for Ruby that dramatically improve performance. You can get them by running `gem install mysql`. If you have problem installing the mysql gem refer [Rails Wiki pages](#)

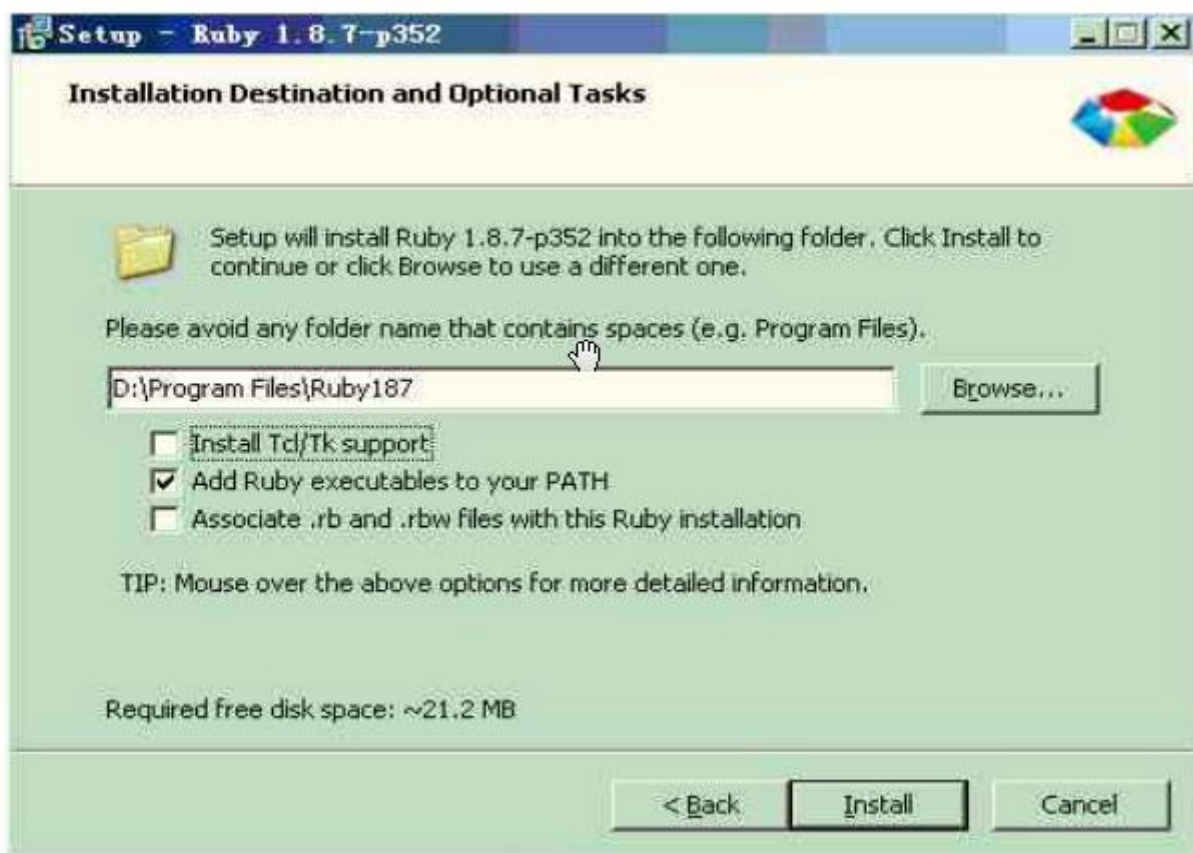
1.2 文件准备

1. redmine-1.2.1.zip: http://rubyforge.org/frs/?group_id=1850
 2. InstantRails-2.0-win.zip: http://rubyforge.org/frs/?group_id=904
InstantRails 是一个 Rails 应用的集成包包括了 Ruby 运行时, Rails 框架, PhpMyAdmin, Apache, MySQL 等, 这样就不需要分别下载需要的东西;
 3. rubyinstaller-1.8.7-p352.exe: <http://www.ruby-lang.org/en/downloads/>
 4. rubygems-1.4.1: http://rubyforge.org/frs/?group_id=126
 5. rails-2.3.4.gem: http://rubyforge.org/frs/?group_id=307
 6. rake-0.8.7.gem: http://rubyforge.org/frs/?group_id=50&release_id=17414
 7. activesupport-2.3.4.gem: http://rubyforge.org/frs/?group_id=570
 8. activerecord-2.3.4.gem: http://rubyforge.org/frs/?group_id=182
 9. actionpack-2.3.4.gem: http://rubyforge.org/frs/?group_id=249&release_id=39555
-

10. actionmailer-2.3.4.gem: http://rubyforge.org/frs/?group_id=361
11. activereource-2.3.4.gem: http://rubyforge.org/frs/?group_id=3507&release_id=39553
12. i18n-0.4.2.gem: <http://rubygems.org/gems/i18n/versions>
13. rack-1.1.0.gem: http://rubyforge.org/frs/?group_id=3113&release_id=34683
14. mysql-2.8.1-x86-mswin32.gem:
http://rubyforge.org/frs/?group_id=1598&release_id=38245
15. gem_plugin-0.2.3.gem: http://rubyforge.org/frs/?group_id=1306
16. daemons-1.0.3.gem:<http://rubygems.org/gems/daemons/versions/1.0.3>
17. fastthread-1.0.1-i386-mswin32.gem: http://rubyforge.org/frs/?group_id=1306
18. cgi_multipart_eof_fix-2.5.0.gem: http://rubyforge.org/frs/?group_id=1306
19. mongrel-1.1.5-x86-mingw32.gem:http://rubyforge.org/frs/?group_id=1306

安装向导

1. 安装 rubyinstaller-1.8.7-p352.exe, 安装时选择创建 PATH, 或者手动将子目录 bin 的路径加入到 Windows 的 PATH 环境变量中 (例如: 在 PATH 环境变量中加入 C:\ruby-1.8.7\bin);



2. 解压 rubygems-1.4.1.zip，并在 Start Command Prompt with Ruby 转至解压缩后的目录，运行如下命令：

```
D:\redmine\rubygems-1.4.1>ruby setup.rb
```

```
E:\redmine> cd E:\redmine\rubygems-1.4.1
E:\redmine\rubygems-1.4.1>ruby setup.rb
RubyGems 1.4.1 installed
```

3. 解压 InstantRails-2.0-win.zip 至磁盘某目录，目录路径不能有空格否则后续安装会提示错误；
4. 双击 InstantRails.exe 启动 InstantRails 服务，看到如下界面：



5. 将 redmine-1.2.1.zip 解压至 InstantRails 安装的 rails_apps 目录，如 D:\Workspaces\InstantRails-2.0-win\rails_apps；将 redmine 的 config/database.yml.example 重命名为 config/database.yml，并修改链接数据库所需要的参数：

```
production:
```

```
adapter: mysql
database: redmine
host: localhost
username: redmine
password: redmine
encoding: utf8
```

production:

```
adapter: mysql
database: redmine
host: localhost
username: redmine
password: redmine
encoding: utf8
```

6. 在 Start Command Prompt with Ruby 命令行模式转至插件所在目录，安装以下插件（安装命令：**gem install rails-2.3.4.gem** 卸载命令：**gem uninstall rails-2.3.4** 插件列表：**gem list**）
- rack-1.0.0.gem
 - rack-1.1.0.gem
 - rake-0.8.7.gem
 - actionpack-2.3.4.gem(request rack-1.0.0.gem)
 - activesupport-2.3.4.gem
 - activerecord-2.3.4.gem
 - actionmailer-2.3.4.gem
 - activeresource-2.3.4.gem
 - i18n-0.4.2.gem
 - rails-2.3.4.gem 该安装包依赖于上述插件，且版本要正确
 - mysql-2.8.1-x86-mswin32.gem

```
C:\Documents and Settings\MaximusGet>gem list

*** LOCAL GEMS ***

actionmailer (2.3.4)
actionpack (2.3.4)
activerecord (2.3.4)
activeresource (2.3.4)
activesupport (2.3.4)
i18n (0.4.2)
mysql (2.8.1 x86-mswin32)
rack (1.1.0, 1.0.0)
rails (2.3.4)
rake (0.8.7)
```

7. 进入 mysql 命令行，执行如下命令：

```
mysql> create database redmine character set utf8;
```

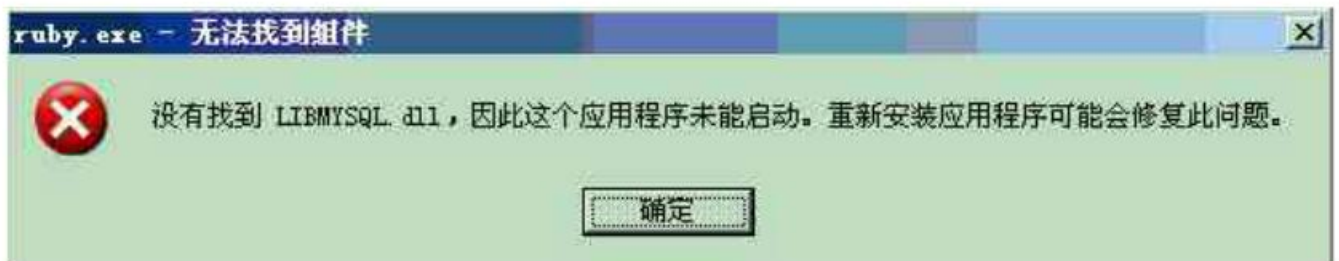
```
mysql> create user 'redmine'@'localhost' identified by 'redmine';
```

```
mysql> grant all privileges on redmine.* to 'redmine'@'localhost';
```

8. 在 Start Command Prompt with Ruby 命令行模式进入 redmine 根目录，执行以下命令：

rake generate_session_store 生成 session 密钥

rake db:migrate RAILS_ENV="production" 创建 redmine 的库表结构，如果出现以下错误



此时将 D:\Workspaces\InstantRails-2.0-win\mysql\bin 目录下 libmySQL.dll 文件复制到 D:\Program Files\Ruby187\bin 目录；

rake redmine:load_default_data RAILS_ENV="production" 初始化 redmine 的默认

配置数据，此时会提示选择语言，输入 zh 回车

```
c:\ Start Command Prompt with Ruby - ruby script/server -e production
-- add_column(:repositories, :extra_info, :text)
-> 0.2500s
== AddRepositoriesExtraInfo: migrated (0.2812s) =====

E:\InstantRails-2.0-win\rails_apps\redmine-1.2.1>rake redmine:load_default_data
RAILS_ENV="production"
<in E:/InstantRails-2.0-win/rails_apps/redmine-1.2.1>

Select language: bg, bs, ca, cs, da, de, el, en, en-GB, es, eu, fa, fi, fr, gl,
he, hr, hu, id, it, ja, ko, lt, lv, mk, mn, nl, no, pl, pt, pt-BR, ro, ru, sk, s
l, sr, sr-YU, sv, th, tr, uk, vi, zh, zh-TW [en] zh
=====
Default configuration data loaded.

E:\InstantRails-2.0-win\rails_apps\redmine-1.2.1>ruby script/server -e productio
n
=> Booting WEBrick
=> Rails 2.3.11 application starting on http://0.0.0.0:3000
=> Call with -d to detach
=> Ctrl-C to shutdown server
[2011-08-31 20:19:21] INFO WEBrick 1.3.1
[2011-08-31 20:19:21] INFO ruby 1.8.7 (2011-06-30) [i386-mingw32]
[2011-08-31 20:19:21] INFO WEBrick::HTTPServer#start: pid=3088 port=3000
```

9. 在 Start Command Prompt with Ruby 命令行模式进入 redmine 根目录，执行以下命令：
ruby script/server -e production 启动 ruby 服务器
10. 打开浏览器，地址栏输入 <http://localhost:3000> 看到激动人心的 redmine 首页界面，默认管理员用户名和密码为 admin;